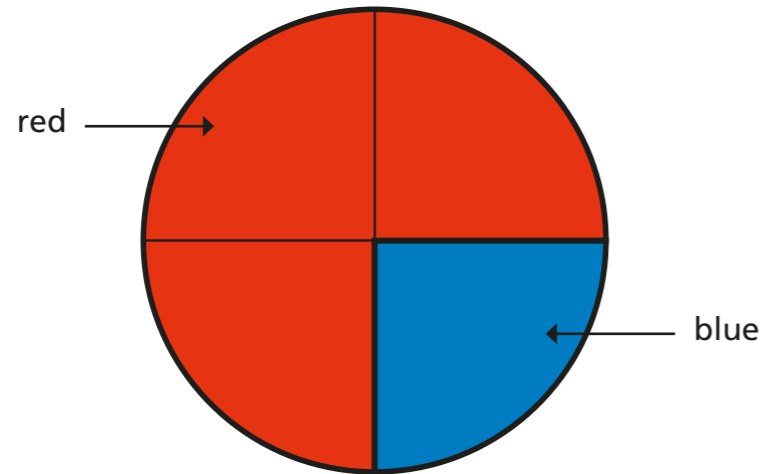


# Compare ratios and fractions

1



a) What fraction of the pie chart is shaded red?

b) Write the ratio of red : blue.

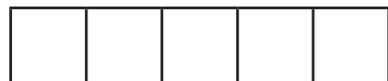
 : 

c) What fraction of the pie chart is shaded blue?

d) Write the ratio of blue : red.

 : 

2



$\frac{1}{5}$  of the bar is red.

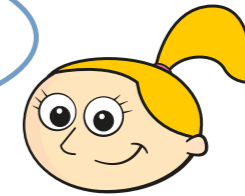
The rest is blue.

What is the ratio of red : blue?

 : 

3 The ratio of men to women in a library is 3 : 4

Three-quarters of the people are men.



Use the bar model to show that Eva is wrong.



What fraction of the people in the library are men?

4 For every 2 horses in a field, there are 3 sheep.

a) Draw a bar model to represent this statement.

b) What fraction of the animals are horses?

c) What fraction of the animals are sheep?

5 The ratio of circles to squares is 4 : 7

a) What fraction of the shapes are circles?

b) What fraction of the shapes are squares?





6 Complete the table.

Bar model	Ratio red : white	Ratio white : red	Fraction that are white	Fraction that are red
	2 : 5			
		3 : 1		
			$\frac{1}{2}$	
				$\frac{2}{5}$

7 Four-fifths of a bag of sweets are red.

What is the ratio of red sweets to non-red sweets?

:

8  $\frac{4}{9}$  of a group of people prefer tea to coffee.

What is the ratio of people who prefer tea to people who prefer coffee?

:



9 Class 8A voted for their favourite sport.

$\frac{17}{30}$  of the class voted for football.

$\frac{1}{5}$  of the class voted for netball.

The rest voted for other.

a) What fraction of the class voted for other?

b) Write the ratio of football : netball : other.

:  :

c) Write the ratio of netball : other in its simplest form.

: